

# Open Spatial Data: A Pillar to Support Innovation and Analytics

## 開放空間數據： 支持創新和分析的支柱

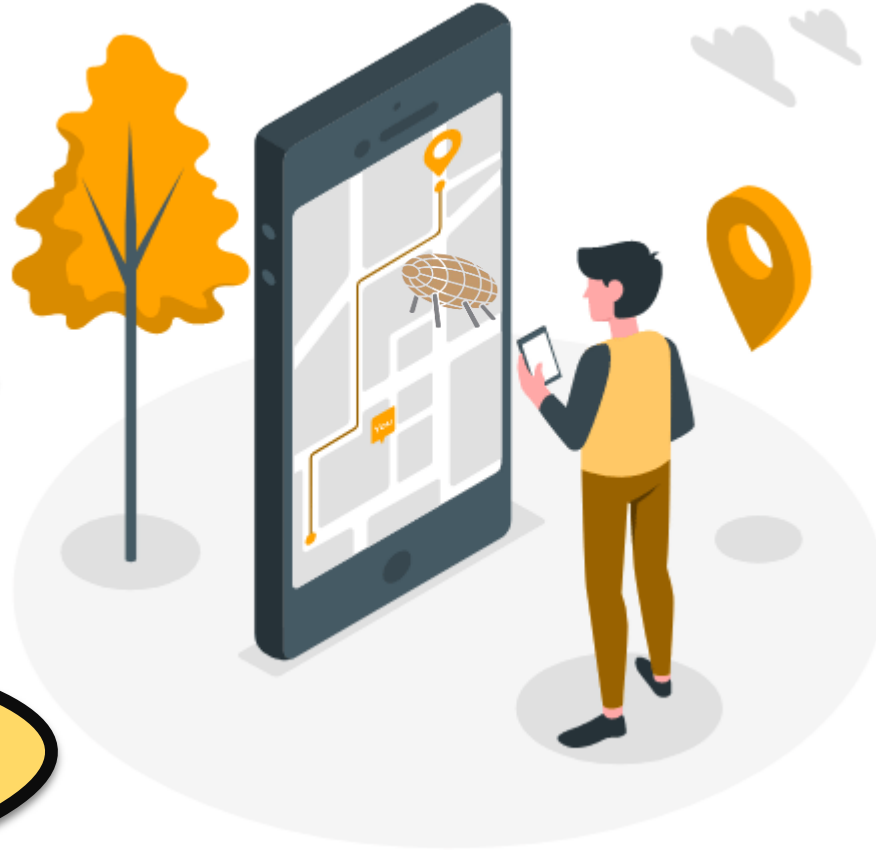
Kenny YIU  
Senior Land Surveyor  
Lands Department



# Do you know?

**Over 80% data** refers to location and their value can be greatly enhanced through geo-enabling and integration.

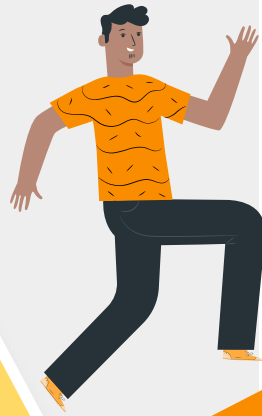
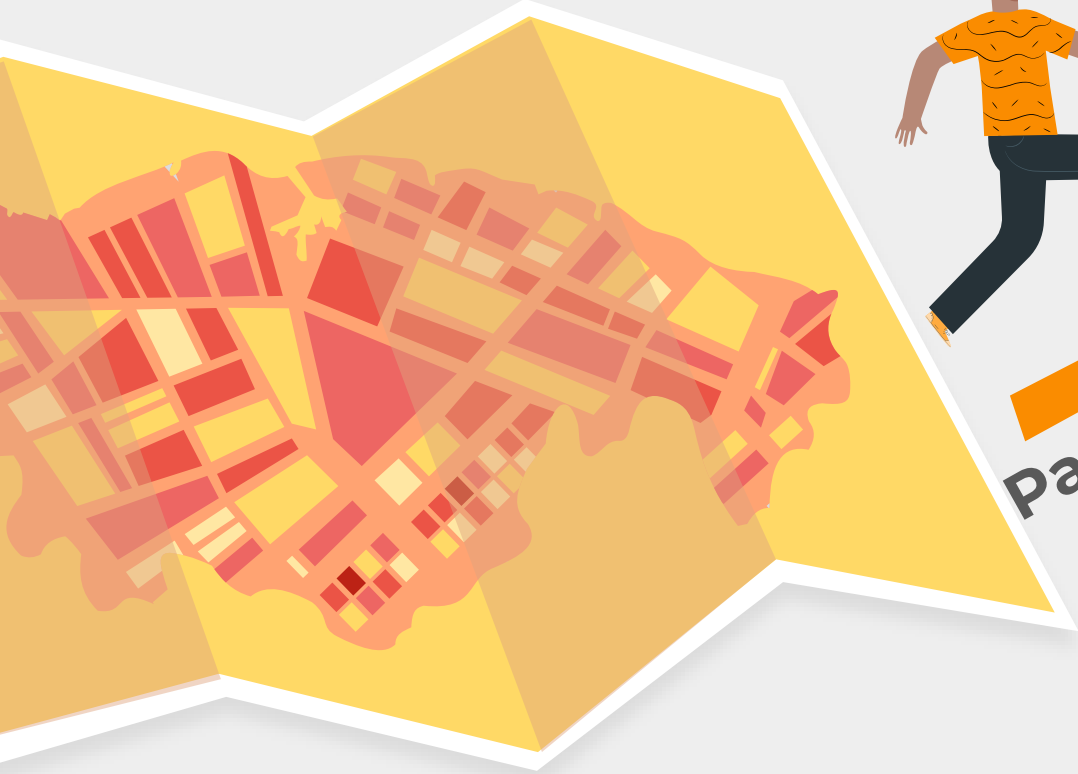
**HOW TO GET TO  
SCIENCE PARK?**



**WHERE IS THE  
NEAREST BUS STOP?**

**ANY RESTAURANT  
NEAR SCIENCE PARK?**

**ANY PARKING SPACE  
NEAR SCIENCE PARK?**



Digital Map

Paper Map



Since 1990s





## Data Alignment Measures (DAM)

## Digital 21 Strategy 2001 - e-Government Policy



## Open Data Pilot Scheme

## GEOINFO MAP 地理資訊地圖



MyMapHK



VoiceMapHK

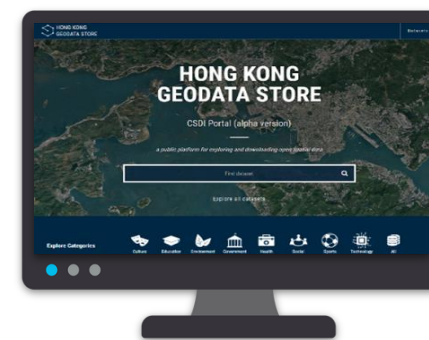
## Digital 21 Strategy 2008 - Digital Inclusion



## Open Data Policy



GeoData Store  
(Alpha Version of CSDI Portal)

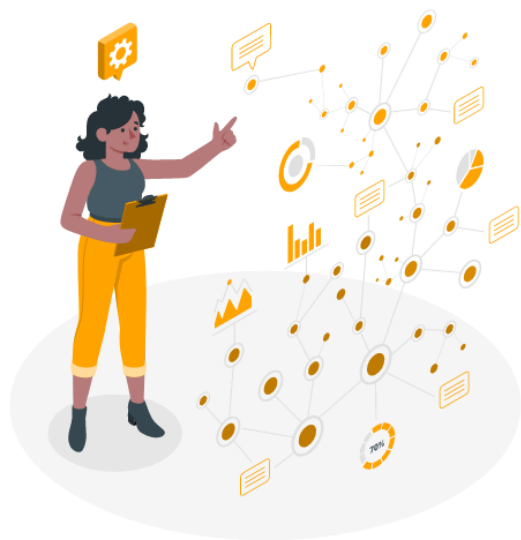


MapAPI



3D Pedestrian Network  
3D Visualization Map  
Digital Map Products

Open Data Policy




Building a Smarter City



空間數據共享平台  
Common Spatial  
Data Infrastructure

Common Spatial Data  
Infrastructure (CSDI)



**Location** is now the 4th driver in decision making, in addition to social, economic and environmental factors.





# 3D Pedestrian Network

Official released on 2 Dec 2020



# Pedestrian Route Planning



測量系統協助測繪工作。

樓盤Guide 馬經 副刊 海外綜合 更多

# 享平台 建全港行人



返回前頁 文章: 《專業議政》真乃光——開放數據研究有助持續改進

Like 0

2020年5月20日

莫乃光 專業議政

## 開放數據研究有助持續改進

開放數據在香港發展已歷時多年，從多年前政府在《財政預算案》提出發放數據集刺激創新和推出「資料一線通」網站發放數據，一直到民間團體和倡導者在其後數年慢慢發展的網絡，舉辦不同活動例如研討會、黑客松(hackathon)，民間推動數據創新的生態圈日漸成熟。筆者有幸參與和見證民間組織者的努力不懈，令更多市...

(節錄)

OUR HONG KONG FOUNDATION 香港研究基金會

主頁 公共政策研究院 報告 活動 觀點 中華學社 多媒體 關於我們

Tags | 鄧淑明 Technology

科技創新

### 鄧淑明：地理資訊為基礎的智慧城市

2016-03-03

撰文：鄧淑明博士 智慧城市聯盟督導委員會主席

新年度《財政預算案》承接了《施政報告》的方向，有不少篇幅提及發展創新和科技的措施，例如用科技券鼓勵中小企進行科研、發展機械人和智能家居護理、繼續推動金融科技發展等，相信科技業界中人都會感到鼓舞。

令筆者感到格外振奮的是，財爺還提到「會完善現有的地理資訊系統，研究連結和整合香港的空間數據，包括架空、地面和地底的設施位置和相關資料」。不過，筆者相信很多人聽到這幾句話都會有點摸不着頭腦，甚至覺得突兀：「這個『地理資訊』、『空間數據』和上文下理的『智慧城市』或科研有什麼關係呢？」

絕對有！如果讀者們有讀過梁守剛先生的文章〈智慧城市〉，相信就會對所謂「空間數據」及其與智慧城市的關係有一定理解。

立法會CB(1)1398/17-18(07)號文件

## 土地供應政策意見書

# 《土地供應政策研究報告 - 要推動副都市中心、及香港 2050 策略規劃》

2018.09.14

吳永輝 (特首選委、城市規劃師) Howard Meng (研究助理/UC Berkeley 實習生)

- 1. 要全面針對相關政策，不只於供應土地**  
政府在土地供應大辯論正確指出進入居住的【貴、細、擠】問題，但土地供應專責小組並沒有針對背後的成因提出長遠的解決方案，而只是局限於提出 18 個土地供應選項。因此，本文件分析多個相關的因素及提出政策方向建議，供進一步研究、討論及落實。
- 2. 只供應土地不能解決政經結構問題**  
解決房屋問題，不能簡單地通過增加土地供應來解決，而更須從房屋政策著手。【貴、細、擠】問題其實是建基於經濟結構、人口成長、房屋需求、政府政策、市場因素等的綜合問題，除了樓價高、租金貴、上車難之外，生活空間狹小擠迫、社區設施不足、營商成本高企，這些都是現實的問題。香港樓價在過去數年持續高企的關鍵原因，其實基於低利率政策、熱錢流入、地產過大經濟因素。

香港 港聞 娛樂 生活 觀點 國際 經濟 體育 女生 科技玩物 熱話 更多

## 政府3億發展空間數據共享平台 室內地圖3D化 未來為行人導航

3D Spatial Data Viewer

社會新聞

撰文：梁德倫 2019-03-10 12:24 最後更新日期：2019-03-10 12:24

# 政府首年 最受歡迎 下載逾 萬

社會新聞

撰文：陳嘉華 2020-01-28 08:00 最後更新日期：2020-01-28 08:00

政府推出開放數據新政策滿一年，共推出700多項數據集，包括交通情況快拍圖像、之港鐵到站時間、實時泊車位空缺等。

2019年最受歡迎數據集包括交通情況快拍圖像、之港鐵到站時間、實時泊車位空缺等。

趨勢分析 | 投資 | 報章 | 專欄 | 知識 | 地產 | TOPick

Topick | hket

發展局申撥3億元 2023年前

社會 18:59 2019/06/20

熱門 | 保潔大法 | 超市大搜查 | 防歌 | 施政報告2020

發展局申請撥款3億元，發展空間數據共享平台



# Elderly Service Planning



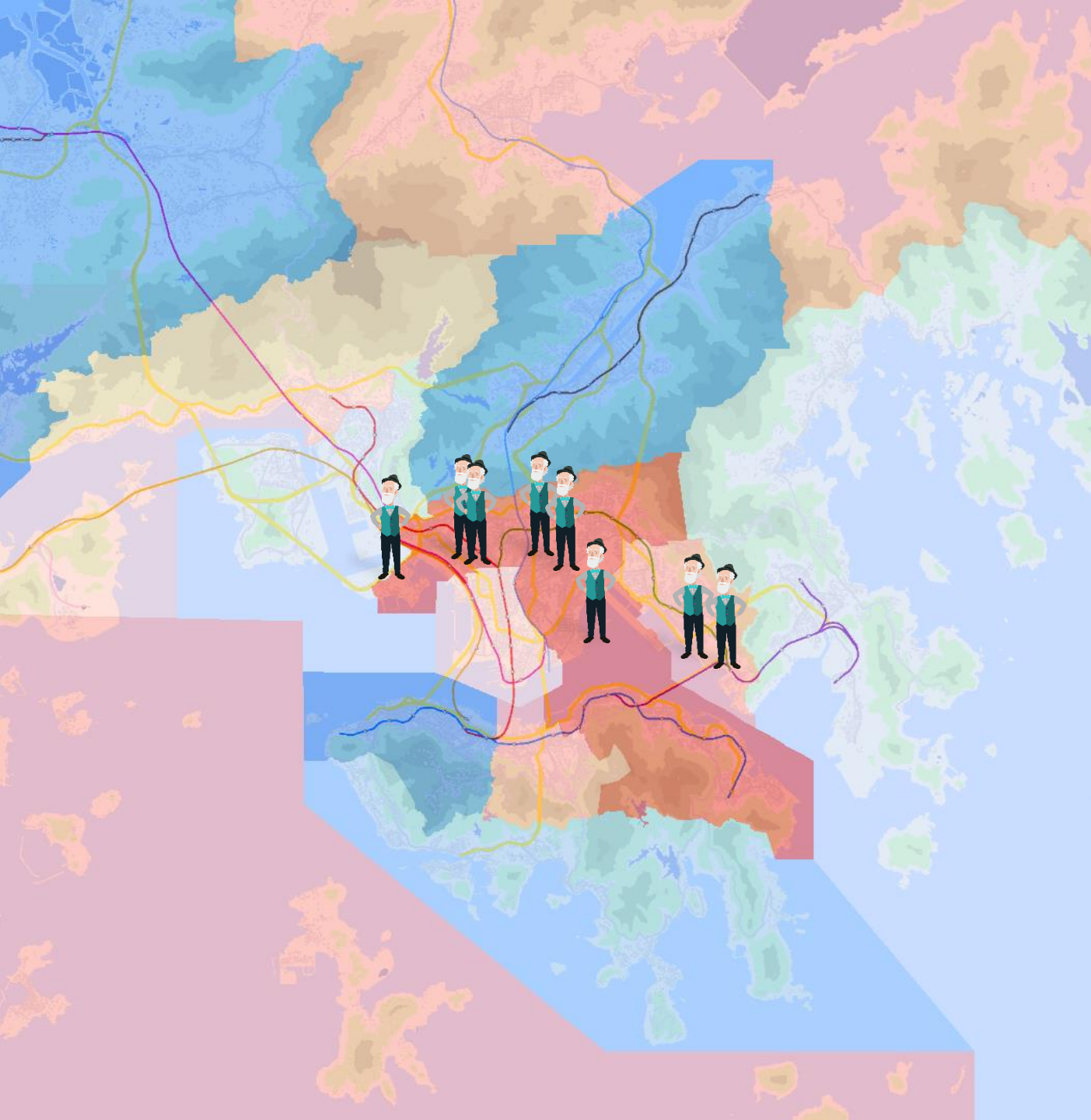


Age Group	Sex	Total	Central & Western	Wan Chai	Eastern	Kwun Tong	Sham Shui Po
30-34	M	233 000	27960	48930	79220	62910	
	F	348 100	41772	73101	118354	93987	
35-39	M	226 900	27228	47649	77146	61263	55920
	F	333 100	39972	69951	113254	89937	83544
40-44	M	239 600	28752	50316	81464	64692	54456
	F	339 900	40788	71379	115566	91773	79944
45-49	M	258 300	30996	54243	87822	69741	57504
	F	330 800	39696	69468	112472	89316	81576
50-54	M	310 200	37224	65142	105468	83754	61992
	F	348 800	41856	73248	118592	94176	79392
55-59	M	291 600	34992	61236	99144	78732	74448
	F	299 300	35916	62853	101762	80811	83712
60-64	M	227 700	27324	47817	77418	61479	69984
	F	233 000	27960	48930	79220	62910	71832
65-69	M	163 100	19572	34251	55454	44037	54648
	F	163 400	19608	34314	55556	44118	55920
70-74	M	109 800	13176	23058	37332	29646	39144
	F	102 000	12240	21420	34680	27540	39216
75-79	M	100 100	12012	21021	34034	27027	26352
	F	109 400	13128	22974	37196	29538	24480
80-84	M	73 500	8820	15435	24990	19845	24024
	F	91 600	10992	19236	31144	24732	26256
≥ 85	M	50 500	6060	10605	17170	13635	17640
	F	102 500	12300	21525	34850	27675	21984
							12120
							24600

# Elderly Service Planning

Identifying Districts with Larger Ageing Population





# Elderly Service Planning

Identifying Districts with  
Larger Ageing Population



 Average Household Income Analysis Report  
平均家庭收入分析報告

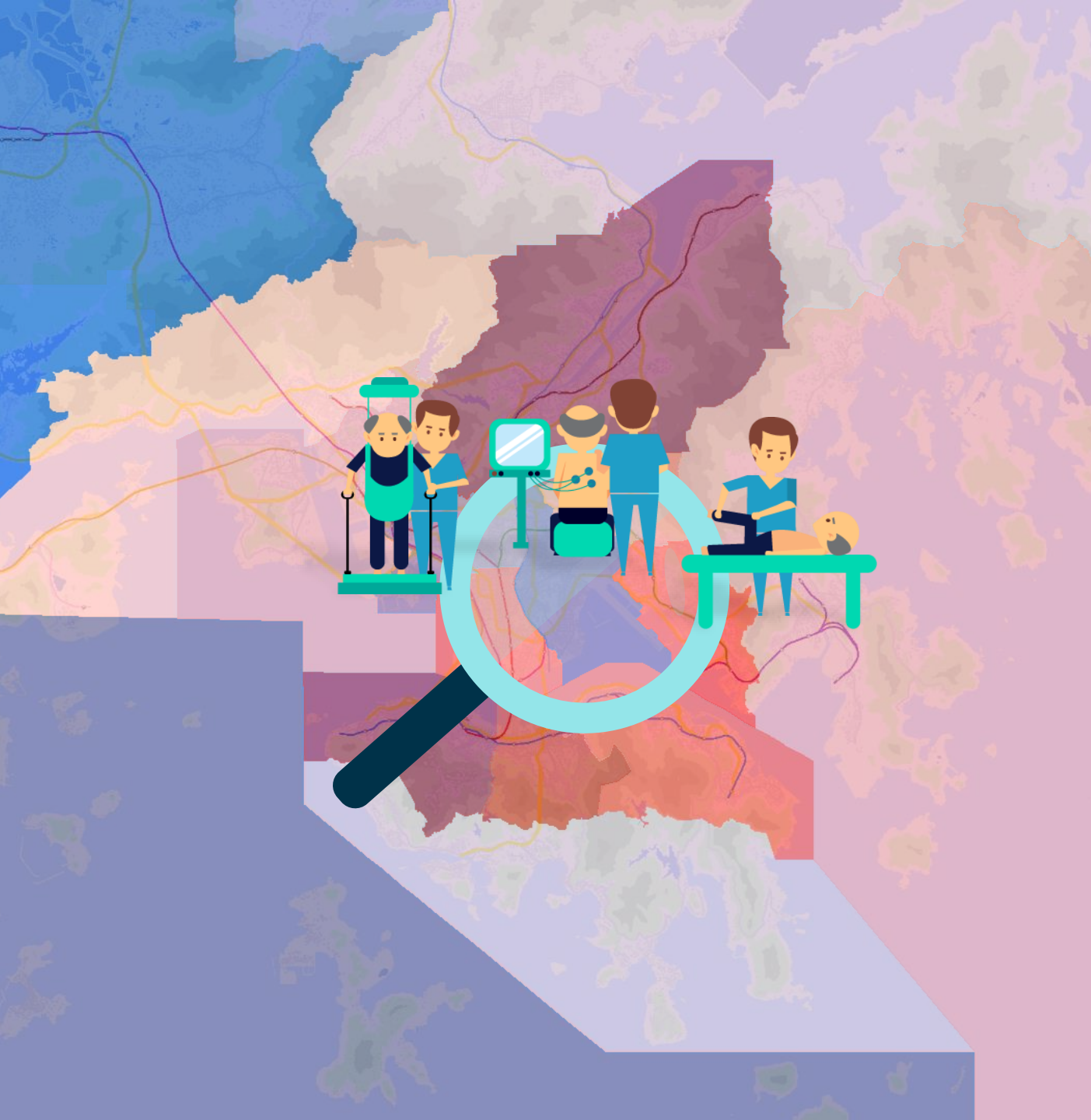
Central & Western	Wan Chai	East-ern	South-ern	Yau Tsim Mong	Sham Shui Po
62 560	68 000	48 960	41 480	57 120	27 200
Kowloon City	Wong Tai Sin	Kwun Tong	Kwai Tsing	Tsuen Wan	Tuen Mun
23 800	29 240	39 440	48 280	44 200	13 600
Yuen Long	North	Tai Po	Sha Tin	Sai Kung	Islands
6 800	20 400	25 160	53 040	48 960	8 160



# Elderly Service Planning

Identifying Districts with Lower Household Income





# Elderly Service Planning

Identifying Districts with Larger Ageing Population and Lower Household Income







# Benefits of Open Spatial Data

## Smart Economy

Create US\$40 billions from geospatial services



## Smart Environment

Reduce 1,688 million metric tonnes CO<sub>2</sub> emission from cars



## Smart Government

Increase 10-40% efficiency by improving data standards



## Smart Living

Decrease 20% emergency response times



## Smart Mobility

Reduce travel time by 12% on average



## Smart People

Save over 21 billion hours from more efficient purchasing decisions





## Smart Economy



### United Kingdom

270 open data companies across UK, with a combined annual turnover of £92 billion



### United States

Produce US\$3 trillion additional value in key sectors, including education, health, transportation, and electricity



### European Union

Market size for goods and services from open data reaches €184 billion  
Create 25,000 direct geo-spatial related jobs



### Japan

Boost up GDP by ¥158.6 billion to ¥701 billion



### Australia

Create AU\$25 billion direct and indirect value in driving social and economic innovation

Sources: EU (2020), ODI (2016), Tanaka & Takagi (2016), Guren et al. (2014), the White House (2014), Yam (2013)

# What is HK's situation?

Singapore  
Japan

**HONG KONG**

South Korea

Taiwan

Malaysia

Mainland China

India

Thailand

Philippines

Indonesia



Overall Score

Asian Digital  
Transformation  
Index 2018

The  
Economist

INTELLIGENCE  
UNIT

TELSTRA 





## 二零一七施政報告 2017 Policy Address



### Launch of Hong Kong GeoData Store (Alpha Version of CSDI)



The Government of the Hong Kong Special Administrative Region  
**Press Releases**  
GovHK 香港政府一站通 繁體版 简体版 RSS

#### Revamped GeoInfo Map and new Hong Kong GeoData Store facilitate smart city development and geospatial data applications

\*\*\*\*\*

The Lands Department (LandsD) today (December 10) launched the revamped GeoInfo Map ([www.map.gov.hk](http://www.map.gov.hk)) and the new Hong Kong GeoData Store ([geodata.gov.hk](http://geodata.gov.hk)). The services will enhance public access to the Government's web map service, and enable public discovery and application of geospatial data published by the Government in a systematic manner for various innovation and information technology applications, so as to facilitate smart city development and geospatial data applications.

The GeoInfo Map is a web map service launched by the Survey and Mapping Office of the LandsD in May 2010. It provides free and convenient public access to accurate maps of Hong Kong, as well as providing the location and related information of various public facilities and services. Since its launch, the LandsD has been working closely with 29 government departments for the delivery of up-to-date map services and geospatial data to the public, and the geospatial data provided through the GeoInfo Map has been enhanced from 120 to 270 types of public facilities.

In future, as the **Government is developing the CSDI, the LandsD will continue making new geospatial datasets** related to the city's built environment and facilities, as well as improving access to various open data of public services through the Hong Kong GeoData Store in both machine-readable downloadable data and APIs. We will continue to enrich the coverage and content of the CSDI, so as **to allow various industries to make more and better use of spatial data in support of smart city development, realising the vision of the Hong Kong Smart City Blueprint.**

A spokesman for the LandsD said that continued enhancement of quality digital map services, development of the CSDI, and opening up more geospatial data all contribute to facilitating smart city applications in collaboration with the public and private sectors, helping to reap the potential benefits by creating economic and social values. Looking forward, the LandsD will continue to collaborate with government departments and various public and private sector organisations to progressively enhance digital map services and introduce more geospatial data, so as to support smart city development and smart city researches and analysis, and providing smart city data and smart city applications.

空間數據共享平台  
Common Spatial  
Data Infrastructure

using innovation and  
Our consultant will  
been carried out on

Common Spatial Data  
private organisations  
art city applications,  
s commissioning a

ing people-centric  
improve the use of

# Why do we need data standard?

Different people may have different way of presenting and recording information


## PUBLIC SERVICE ANNOUNCEMENT:

OUR DIFFERENT WAYS OF WRITING DATES AS NUMBERS CAN LEAD TO ONLINE CONFUSION. THAT'S WHY IN 1988 ISO SET A GLOBAL STANDARD NUMERIC DATE FORMAT.

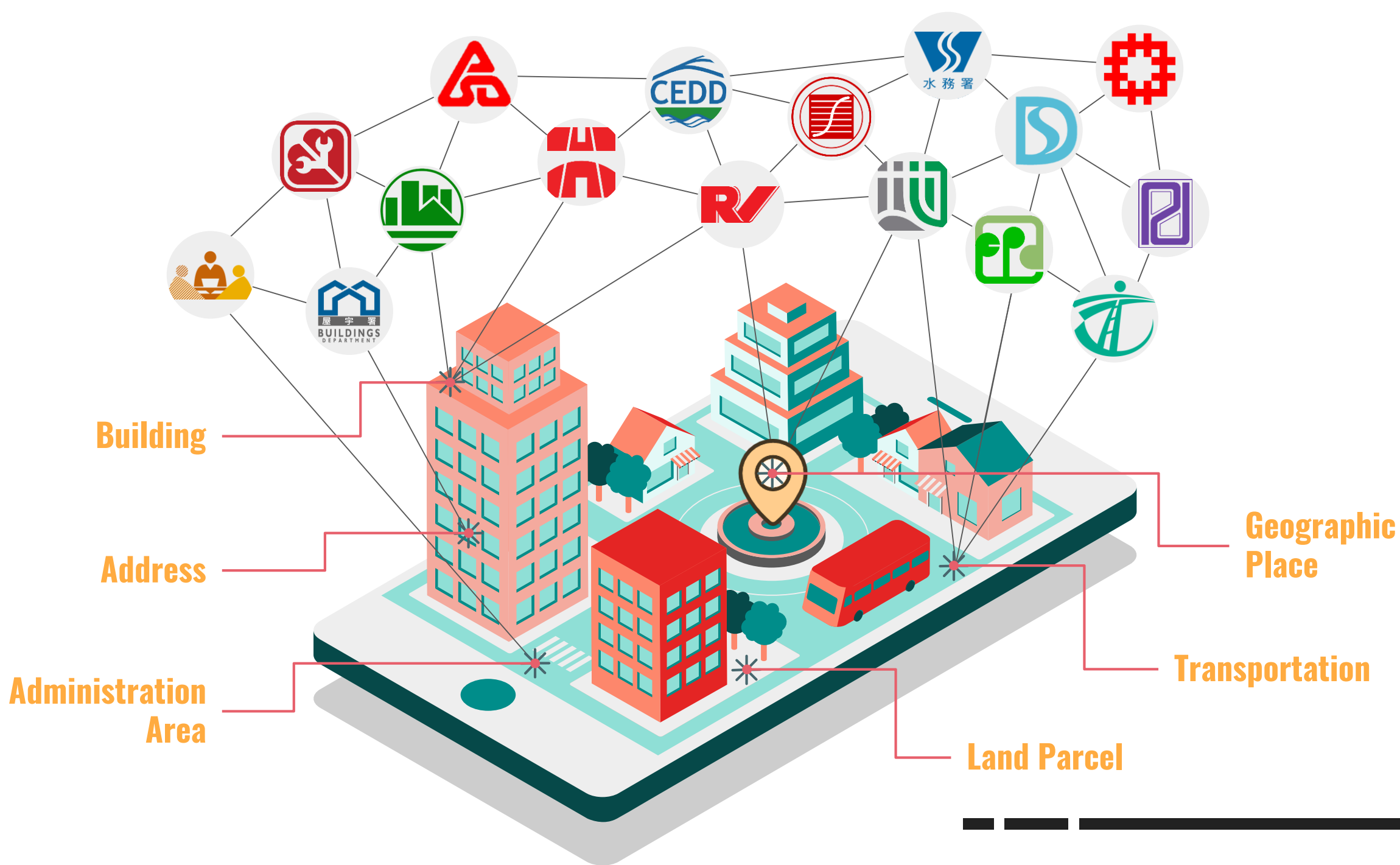
THIS IS *THE* CORRECT WAY TO WRITE NUMERIC DATES:

**2013-02-27**

THE FOLLOWING FORMATS ARE THEREFORE DISCOURAGED:

02/27/2013 02/27/13 27/02/2013 27/02/13  
20130227 2013.02.27 27.02.13 27-02-13  
27.2.13 2013.II.27. 27/2-13 2013.158904109  
MMXIII-II-XXVII MMXIII  $\frac{LVII}{CCCLXV}$  1330300800  
 $((3+3) \times (111+1) - 1) \times 3 / 3 - 1 / 3^3$  ~~2013~~   
10/11011/1101 02/27/20/13  $\begin{matrix} 2 & 3 & 1 & 4 \\ 0 & 1 & 2 & 3 & 7 \\ & 5 & 6 & 7 & 8 \end{matrix}$

Source: <https://xkcd.com/1179/>



*"Every Skyscraper is Built on a  
Strong Foundation of Pillars"*

# SMART HONG KONG

